



# **KGM** | **ENGINEERING**

THE BRIDGE BETWEEN CONSTRUCTION AND ENGINEERING

## **EXPERIENCE PORTFOLIO**

### **Bridge Rehabilitation Expert**

---

1. Objective & Company Description
2. Engineering Experience
  - Structural Engineering & Consulting
  - Specialty Hydraulic Lifting Design
  - Specialty Bridge Demolition Design
  - Specialty Construction Engineering
3. Bridge Engineering Project List
  - Pre-Tender & Tender
  - Bridge Design & Evaluation
  - Jacking Design
  - Bridge Demolition
  - During Construction

## **SECTION 1**

### **COMPANY & OBJECTIVE**

KGM ENGINEERING was co-founded by Tamas Kalenda and Katia Gauthier in 2011. They have worked in the construction industry for nearly 20 years and they bring to KGM the knowledge and experience required in both engineering and management to assist in the overall success of any construction projects. Certified in Canada to practice in Ontario, British Columbia, Yukon, Northwest Territories, Alberta, Saskatchewan, New Brunswick, Nova Scotia and Newfoundland/Labrador.

In the construction industry of today we understand that success is not only a major team effort but also very dependent on design, engineering deliverables, precision, and meeting schedule deadlines. We also believe in design innovation that allows our clients to utilize all of their available resources and experience. We don't believe in reinventing the wheel. We believe in sharing strength and knowledge with one main goal - "finding the best and most cost-efficient solution". We make business personal.

KGM Engineering has many combined expertise, all related to structural engineering.

- Bridge Rehabilitation
- Structural Analysis, Design and Evaluation
- Construction Engineering and Constructability
- Geotechnical Engineering

KGM Engineering has expanded internationally, certified and operating in Europe and Africa. KGM Europe located in Budapest, Hungary, providing structural engineering services for bridge engineering, tower engineering and various other specialty projects. KGM Africa located in Kigali, Rwanda, specializing in the field of renewable energy, geotechnical engineering services, slope stability R&D and community development and sustainability.

### **OUR MISSION:**

- ❖ To provide clients across Canada and worldwide with quality, innovative and efficient structural engineering services for all Construction Industries.
- ❖ To work safely, maintain the highest quality of workmanship, and continuously improve and develop our people to serve and adhere to our core values.
- ❖ To give back and support community development and sustainability

### **CORE VALUES:**

**Trust, Professionalism, Innovation, Excellence, Respect & Integrity**

## SECTION 2: TEAM OVERVIEW

The KGM Engineering experience is not only supported by both the co-founder's years of construction experience but also supported with our "A"-Team. Their knowledge and various level of education and training is one of our most diversified qualities. We don't build on just one strength, we all share and join forces to find key solutions even when presumed impossible. These various levels include, PhD's and master's degrees in structural engineering, geotechnical and geostructural engineering, construction engineering specialist, senior project management and certified engineering technologist experience.

The engineering industry has never been more challenging, with greater responsibilities, schedule restrictions and trying to keep up with limitless expectations. This has shaped a generation of designers to become accustomed to achieving more with less within shorter deadlines and maintain and satisfy clients demands. It is for this reason that building the right team is one of our top priority.

KGM takes great pride in our TEAM. We focus on building and supporting both strengths and weaknesses to create equilibrium. It is in this balance that we become stronger and more efficient, resulting in limitless innovation that brings all of our client's the expected success.

Our Team has demonstrated over and over the following skills and achievements. They continue to deliver work with the highest quality by continuously:

- ❖ Proving leadership, inspiring, and motivating each other as a team
- ❖ Being self-aware, knowing each other's limitations and strengths and capitalizing on this self-awareness for efficient task sharing and innovating solution
- ❖ Being self-motivated and able to work well with each other under all types of pressure
- ❖ Showing confidence, assertiveness, and self-assurance with management team for overall company development
- ❖ Being resilient, optimistic, open to change, showing openness, and honesty in all dealings

We also believe in joining strengths with other engineering companies by creating a structure that allows all companies to join forces, share the work and be that much more diversified in various disciplines. This also guarantees that any schedule deadline-no matter the unforeseen obstacles, are fulfilled. We as a team, either internal or external will find that ground-breaking solution that will meet satisfaction on all levels.

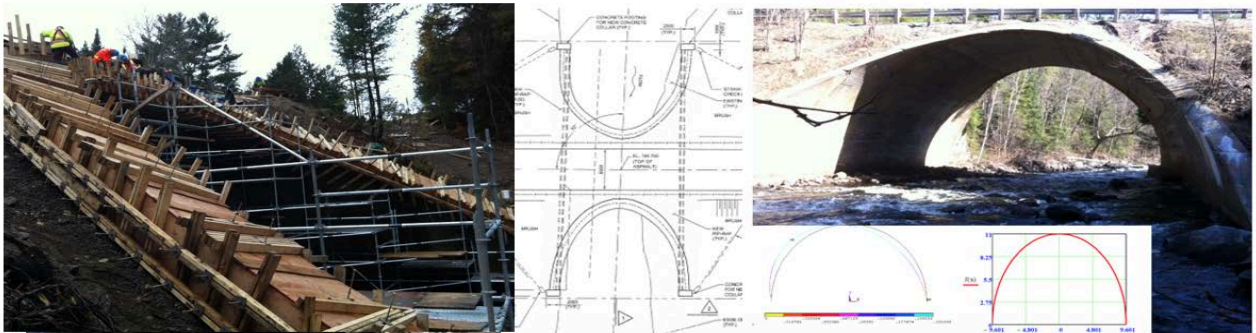
## SECTION 2

### STRUCTURAL ENGINEERING & CONSULTING EXPERIENCE

- New Infrastructure & Rehabilitation Design & Evaluation
- Overall Structural Analysis of Bridges, Culvert & Buildings
- Various Types of Structural Analysis for Bridges, Culvert & Buildings
- Bridge, Culvert & Building Structural Design
- Bridge, Culvert & Building Restoration & Reinforcement Design & Proposal
- Structural Bridge, Culvert Evaluation & Assessment
- Swing Bridge Balancing Procedure & Bridge Jacking Design
- Design Build, Constructability Review & Analysis
- Review and Consultation
- Design & Proposal of Structural Reinforcement of Existing Structures
- Various Types of Post Tensioning Construction Design & Analysis
- Custom Design as per Client Requirements

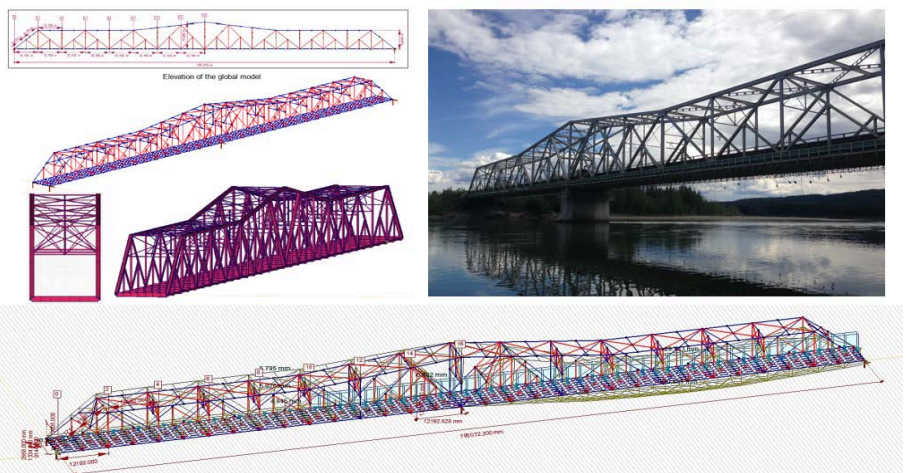
#### Existing Culvert Reinforcement Structural Design Analysis

Completed overall structural design analysis evaluation of existing culvert. Innovative repair solution, to allow for the reinforcement of the culvert under rehabilitation. Budget allocation could not allow for a new culvert replacement.



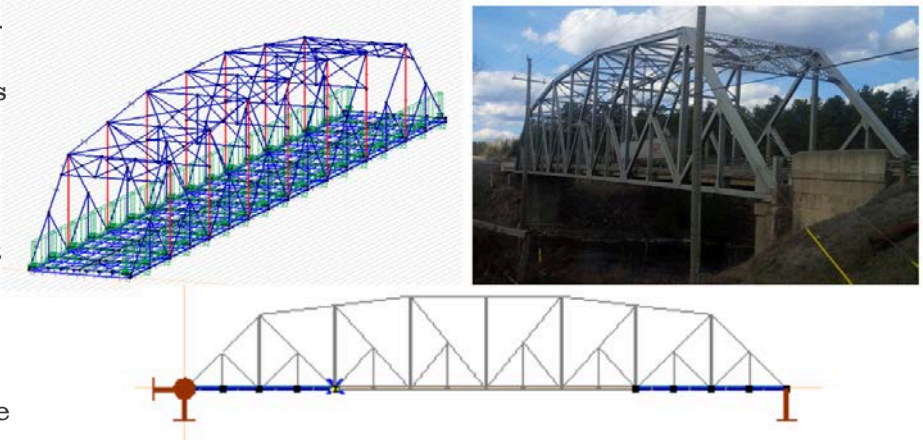
#### Complex Global Structural Analysis

Complex structural design analysis evaluation of the pier and design post tension strengthening to enable critical repair on the pier bearing. Our permanent pier strengthening allowed the center bearing of 80-year-old truss bridge to be converted to earthquake resistance bearings.



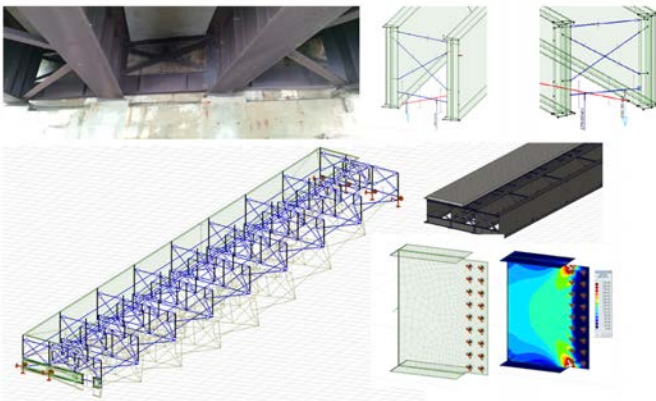
**Structural Evaluation**

Multi-span bridge consists of a large truss span and shorter steel girder span. Structural evaluation on both spans to determine internal forces and post tensioning design for member strengthening including detailed stringer analysis to determine adequacy due to corrosive section loss.



**Complete Analysis of Existing Post Tension**

Complete structural design analysis of post tensioned cast in place voided curved concrete deck. Unique lateral restrain design for vertical jacking and bearing replacement due to curvature and live load traffic.

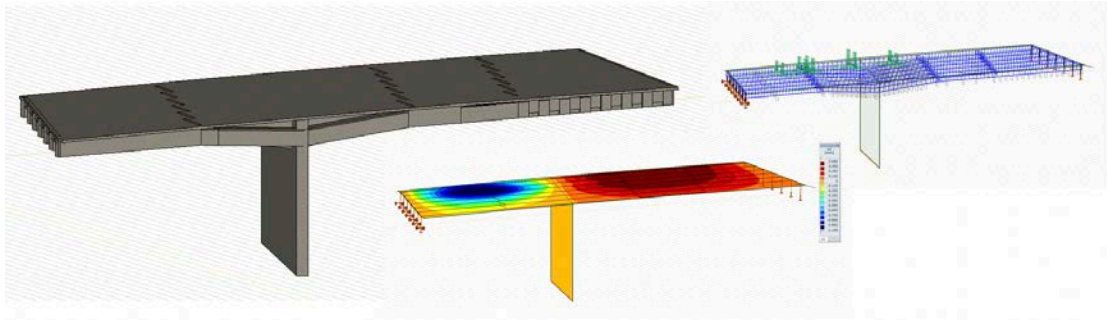


**Bridge Support Load Review**

Detailed bridge evaluation using existing drawings to ensure that bridge can support live and dead loads during temporary support. Structural modification had been implemented to achieve successful bearing replacement.

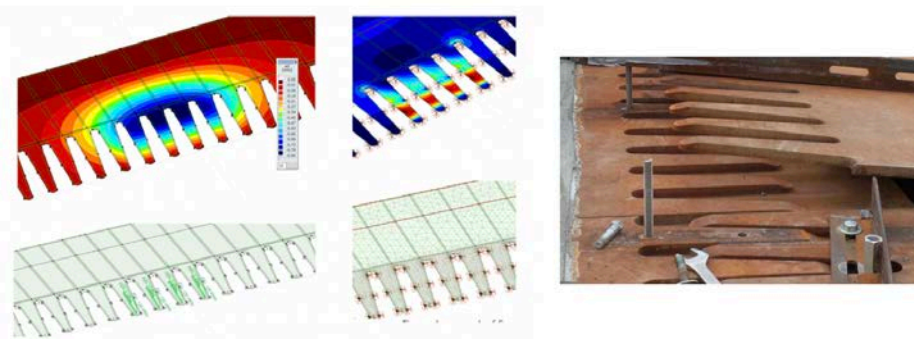
**Sequential Concrete Removal Impact**

Completed a detailed analysis for sequential concrete removal while bridge remain under open traffic conditions. The original intent was to speed up construction of the concrete arch re-facing task. Complex analysis was completed for step by step construction while constructions access and traffic continuously maintained.



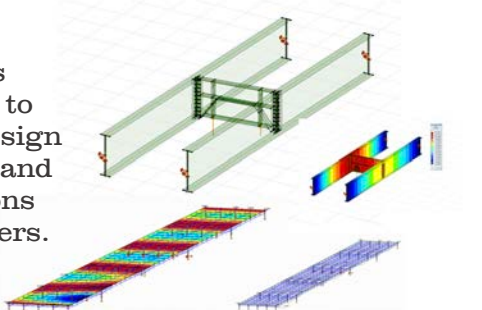
**Expansion Joint Fatigue Analysis**

Completed detailed fatigue analysis according to the CHBDC for the finger expansion joint in comparison with the Alberta standard specific to expansion joint. This to determine the maximum allowable gap tolerances at different locations of the joint. Also determine the life expectancy for approval by the owner.



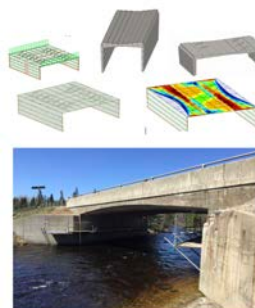
**Re-Design Bridge Diaphragms**

Completed load analysis according to be able re-design diaphragms and its connections to main girders.



**Bridge Condition Evaluation**

Completed bridge evaluation of cast in place rigid bridge, based to determine load restriction and pinpoint areas where inadequate reinforcing exists.

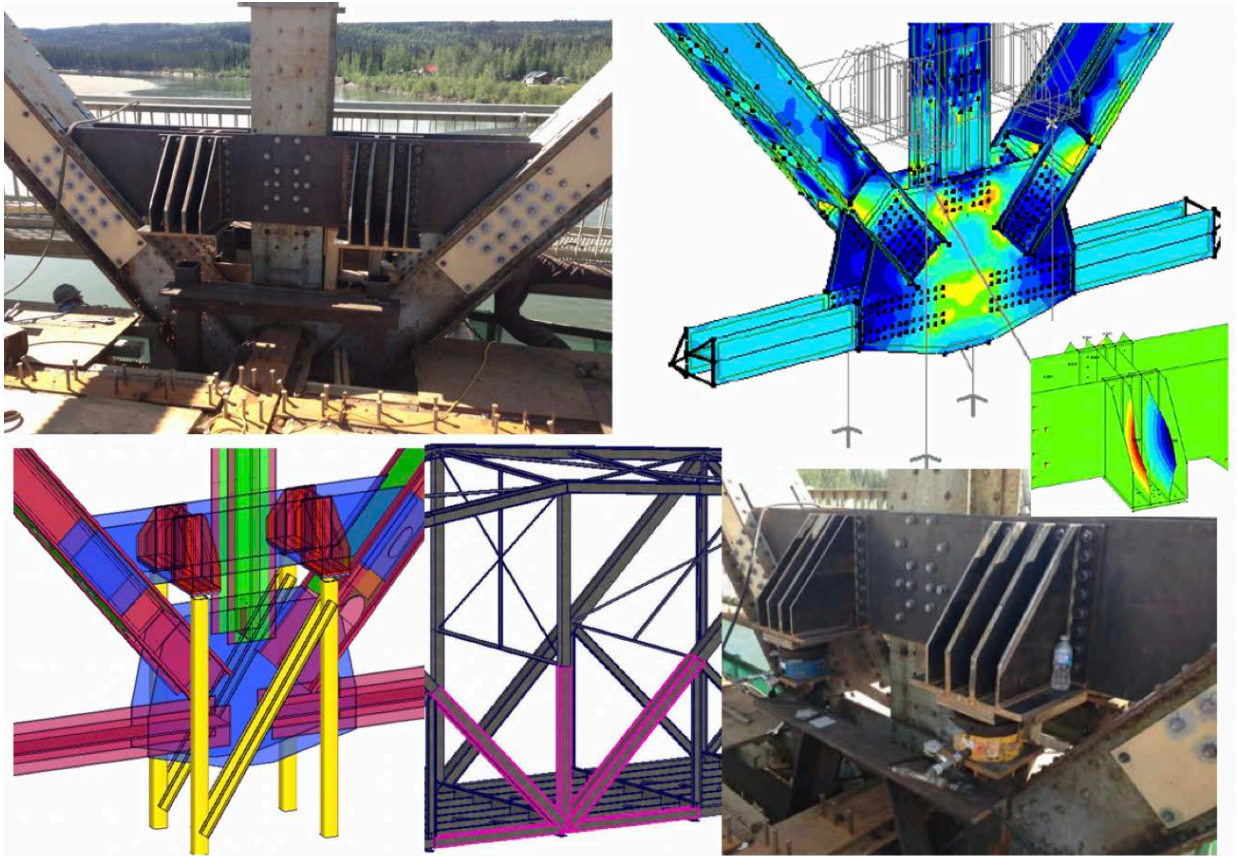


## SPECIALTY DESIGN BRIDGE JACKING EXPERIENCE

- Hydraulic Bridge Jacking Design Consultation
- Bridge Modeling & Analysis
- Lateral Jacking & Support Design
- Hydraulic Design Relocation of Superstructures
- Temporary Jacking Support Design
- Custom Design in Both Bridge & Building Hydraulic Lifting
- Inspection & QVE Certifications

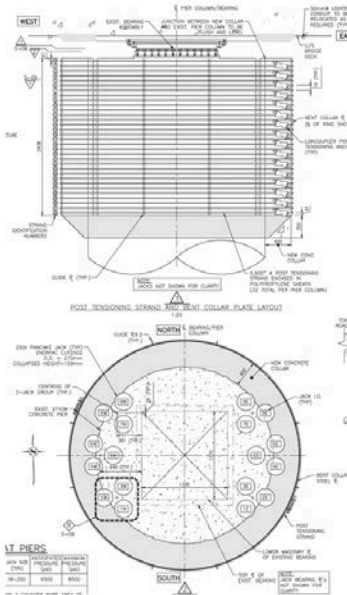
### Reinforce Existing Truss to Allow Bridge Lifting

Two 90 m. span truss bridge built in mid twentieth century. Bearing replacement at abutments and pier while maintain single lane traffic. Complete structural design analysis and finite element modeling of truss bridge. Design new members, post tension existing pier, design shoring for lateral and vertical loads and hydraulic lifting. 4 X 250T jacks used to lift at piers.



## Design Post Tension Collars for Bridge Lifting

Bearing replacement at abutments and on top of existing concrete columns using post tension collars to support 39,000kN SLS jacking load. Extremely tight job site between East and West bound of Hwy. 407, 32 post tension strands used around concrete collar to widened exiting columns.



## **BRIDGE LATERAL JACKING DESIGN & TEMPORARY SUPPORT**

### Humber River Bridge Go Transit, Toronto, ON

Conceptual design for lateral sliding of 9 span plate girder bridge on existing abutments.

### Hwy. 3 over Grand River Cayuga, ON - in Collaboration with Brown Engineering

Conceptual Design of lateral jacking of a multi-span new girder bridge following the removal of old truss bridge and reinforcement of the old piers. Design consisted temporary piers supporting new bridge spans under live load traffic and temporary sliding beams and procedures and piers. Developed procedures for sliding, sized required equipment and material.

### MTO 2013-2023 Glendale Avenue, St Catharines, ON

Conceptual Design to complete the lateral sliding and temporary support of both existing bridges for rapid replacement.

**SPECIALTY DESIGN BRIDGE DEMOLITION EXPERIENCE**

- Bridge, Culvert & Building Demolition Design & Proposal
- Bridge, Culvert & Building Modeling and Analysis
- Bridge, Culvert & Building Demolition Consulting
- Temporary Support Design
- Bridge Erection Procedure
- Custom Design as per Client Requirements
- Inspection & QVE Certifications

**Pic River Bridge, Marathon, ON**

Multi-span truss bridge complete superstructure removal design. Temporary post tensioned top chord to enable to cut bridge in half over the river and remove members in sequence towards the abutments using small cranes due to ground pressure restriction.

**Donald Bridge over Columbia River, Golden, BC**

Multi-span bridge, complete demolition design. 390,000lbs suspended girder span at the middle, lowered onto concrete blocks 70' below just over the river using hydraulic jacking system.



**CONTINUE SPECIALTY DESIGN BRIDGE DEMOLITION**



**Hwy. 22 Drayton Valley Bridge**

Multi-span truss bridge built in early 20th century. Demolition consists conventional demolition off the ground level and 60m main span lowering onto partially barges over the River.



**102 Ave. Bridge over Groat Road,**

Multi-span plate girder and truss bridge built in early 20th century over the Groat road gorge. Bridge consisted 7 spans total of 345'. Complete demolition design including 70' tall truss towers.



**Yellowhead Bridge**

70-meter single-span truss bridge, design included jacking to confirm weight, crane lifting procedure, and slope design and stability analysis. Complete dismantling plan.



**Old Memorial Dr. Bridge**

Multi-span truss bridge built in early 20th century. Hinged spans lowering procedure and design using hydraulic jacking system. Designed system as installed and section was lowered onto ice bridge in a single day

**OTHER CONSTRUCTION ENGINEERING EXPERIENCE:**

- As Required New & Rehabilitation Design
- Design & Construction Procedure Consultation
- Temporary Access & Scaffold Design & Inspection
- Temporary Platform & Suspended Platform Design & Inspection
- For Construction/Working Procedures/Review & Inspections
- All Required Certified Construction Procedures
- Demolition Plan/Procedure & Review
- Custom Shoring & Shoring Design
- Cofferdam Design, Sheet Pile, Soldier Pile, & Lagging Design
- Culvert replacement, formwork design, creek diversion procedure
- Temporary Support Structures, for Bridge & Culvert Rehabilitation
- Deck & Overhang Formwork Design
- Concrete Rehabilitation & Various Formwork Design
- Concrete Repair Method Specifications
- Safety Procedures and Requirements

**Observation Platform Design**

Platform construction design at 15 m over the ground without direct ground support. The entire form system was designed to hang off of the pier. Sequential pour and different hanging system utilized for each stages.

**Temporary Tower Support & Retaining Wall Design – Slope Stability Analysis**

Designed for the girder erection stages. Towers were installed on the slope. - 150T crane supported by retaining wall utilizing deadman and tie back system while caisson drilling operation restricted tie back locations. Retaining wall design for crane access by KGM



## Cofferdam Design, Sheet Pile, Soldier Pile, & Lagging Design

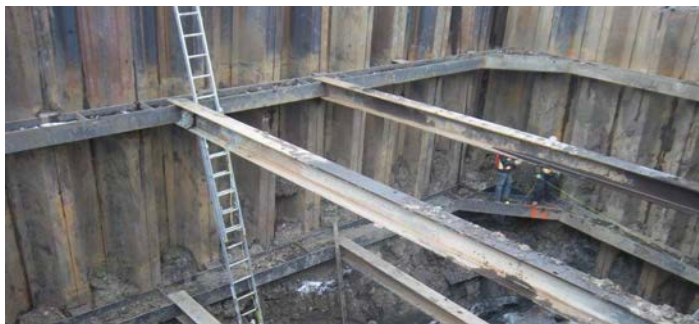
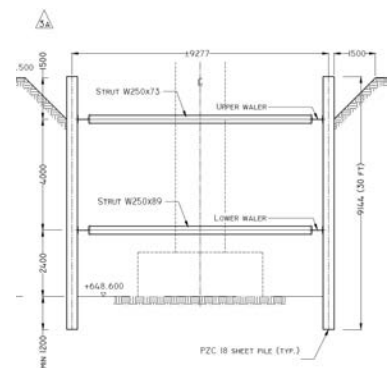
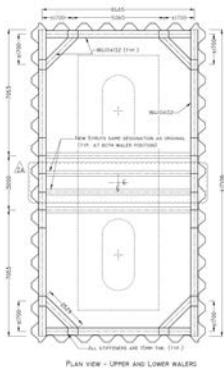
### Mississauga Lake Dam Rehabilitation, Haliburton, ON – Parks Canada

Sheet pile cofferdam for the dam installation. Design to withstand high water-flow. Protected work zone under 23m<sup>3</sup>/s flow in 7 m wide channel. Sheep piles and steel anchor blocks anchored into bedrock.



### Pier Cofferdam – South Saskatchewan River, Medicine Hat, AB – AT, 2012-208

Design of 8m deep pier cofferdam for now pier-pile installation in the North Saskatchewan river. 2 rows of waler for max 7m water-pressure.

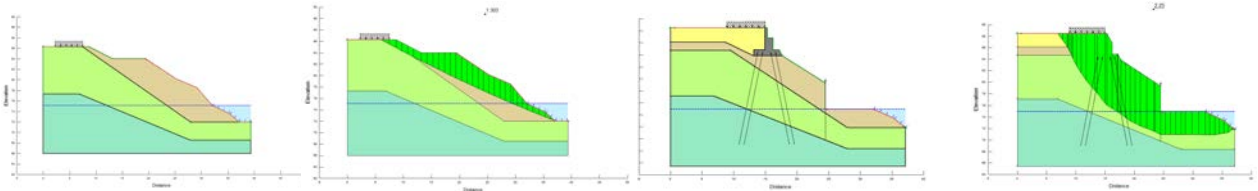


### Other Cofferdam Projects

- Abutment Cofferdam – College Road Bridge, Town of Fort Erie, ON – U-11-41
- Cofferdam – Decew Waterworks Canal – OPG. 2013-152
- Lower terminal Cofferdam, Inclined railway, Niagara Parks, ON 2012-153
- Cofferdam – Hardistry Lift Station, Hinton, AB
- Pier Cofferdam – MTO 2015-2004, ON. Hwy 400/Hwy 9
- Paul First Nation - Wastewater lift station - AB

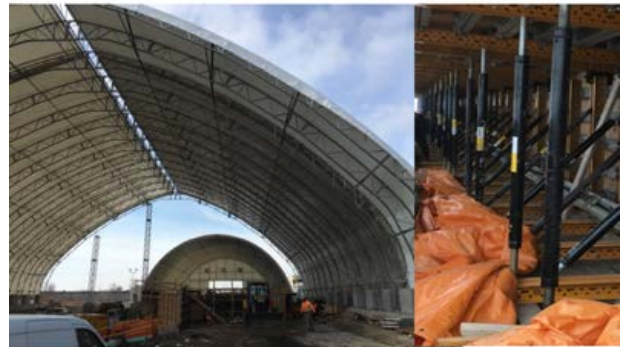
**Global Slope Stability and Crane Temporary Support Design**

Completed a global slope stability analysis and found that the slope was unstable to support micropile installation for the pier therefore we have proposed to change the construction sequence and install the abutments first. Later the Crane was supported by the new abutment for micropile installation at the pier.



**Winter Protection- Dome Design**

Completed a dome foundation structural analysis design along with the peer review of the dome design for a train bridge construction at King Street Waterloo. Reinforced concrete footing was used at both side but size were restricted due to fiber optic cables and train tracks. We also completed the anchorage design analysis for the entire building and bracing system for end walls.



**Culvert Replacement**

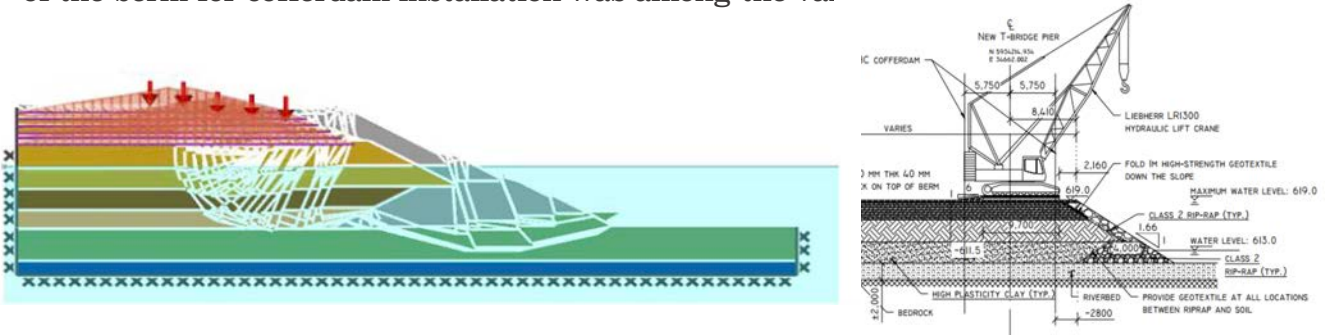
New culvert construction. Main section of half a circle but inlet and outlet sections are square. Completed design and construction of transfer section



Over 10 meter Tall Access Berm Design

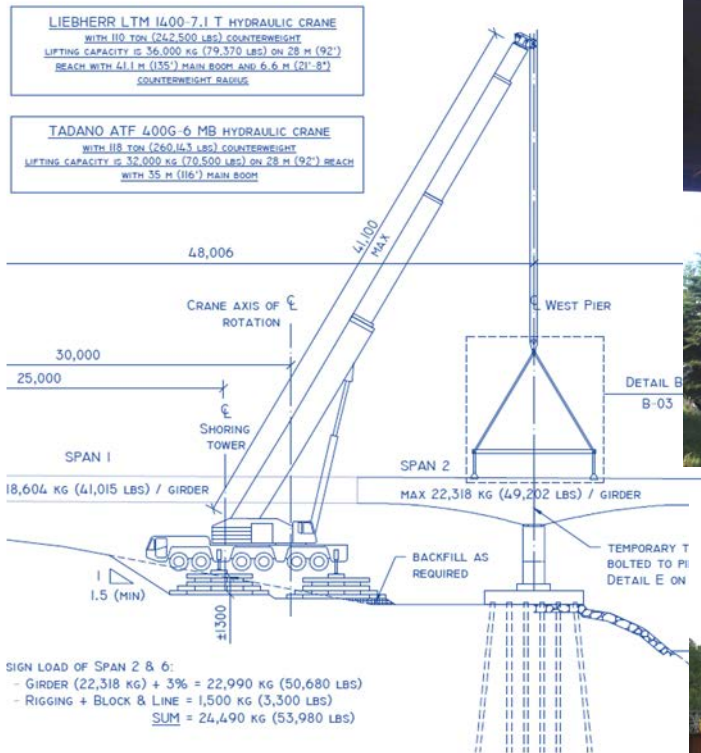


More than 10m tall access berm design in downtown Edmonton for old bridge removal and new bridge installation over the North Saskatchewan River. Extremely tight displacement requirements along with restricted type of material use for 100T crawler cranes. Possible high water level fluctuations, different types of crane, partial removal of the berm for cofferdam installation was among the variables



## Bridge Erection & Temporary Support Design

Temporary support design and complete erection design was completed utilizing tandem pick for center piece. We completed detailed stability analysis and torsional buckling analysis for Certain stage of erection when 15m girder section was cantilevered over the river. Longitudinal and lateral jacking was also utilized to ensure proper fit of the girders.



<b>MTO CONTRACT - BRIDGE ENGINEERING</b>			
<b>CONTRACT DESCRIPTION</b>		<b>CONTRACT DESCRIPTION</b>	
MTO 2019-6080	Bertrand Creek Bridge (Site 48E-0031/B0), (Site 48E-0032/B0), 28.3km East of Highway 614.	MTO 2018-2007	Thorold Tunnel (Site No. 34-177T)
MTO 2019-5117	Little White River Bridge (Site No. 38S-0091/B0), 35.4 km north of Highway 554.	MTO 2017-5122	Highway 141 (Site No. 44-262) , (Site No. 44-261)
MTO 2019-5109	Moonbeam Creek Culvert (Site 39W-0110/C0), (Site 39E-0002/B0), Highway 11.	MTO 2017-5107	Hwy 69 & Hwy 529 - (Site No. 44-009), (Site No. 44-042) ,(Site No. 44-053) ,(Site No. 44-270) & (Site No. 44-271)
MTO 2019-5104	Highway 529. Highway 529 from South Junction of Highway 69 to North Junction of Highway 69	MTO 2017-5101	North of Hwy 17, Replacement, 6.7 km South of North Entrance at Cartier
MTO 2019-5099	Hwy 631 Fraser River Bridge, 23.6 km West of Hwy 631; Pitopiko River to Skunk River Bridge East of Hwy 631.	MTO 2017-5008	Highway 118, From 2.5 km East of Black River Bridge, Easterly 22.8 km to 0.3 km West of Highway 35
MTO 2019-5038	Driftwood River Bridge Hwy 577, (Site 39E-0096/B0) & (Site 39E-0097/B0)	MTO 2017-4047	Part A: Bay of Quinte Skyway Bridge (Site No. 11-245); and Part B: Intersection of Hwy 49 and Old Highway 2
MTO 2019-5037	Island Lake Rd to Hwy 11, Creek Culvert 3.1 km South of Hwy 575 and Hwy 539A at Poor Man Creek Culvert	MTO 2017-4046	Brandon Creek Bridge Site 17-0651/ & , Site 17-0652
MTO 2019-5009	Highway 94, from Terrace Road (South Junction) northerly 3.5	MTO 2017-4034	Norris Whitney Skyway Bridge Site No. 28-028
MTO 2019-5006	Gull River Bridge South (Site 40X-0024/B0), (Site 40X-0023/B0), (Site 40X-0117/C0), & (Site 40X-0171/W0),	MTO 2017-4031	Highway 417 from 0.9 km west of Maitland Ave. (I.C. 126) to 1.1 km east of Island Park Drive (I.C. 125)
MTO 2019-5004	Sgt. Aubrey Cosens VC Memorial Bridge at Latchford (Montreal River Bridge - Site # 47X-0058/B0)	MTO 2017-4017	From Mallorytown Road (I/C 675) Easterly to Maitland Road (I/C 705) and Highway 401 Sharpe's Lane Underpass (Site 16-125)
MTO 2019-4038	3KM West of Jocyeville Rd. Interchange (I/C 632) Easterly 1.5km to HWY	MTO 2017-4008	Sawers Creek Bridge - Site No. 26-40 ,Site No. 26-141 Burleigh Falls Bridge - Site No. 26-022
MTO 2019-4029	1000 Islands Parkway, Knight's Creek Culvert Site No. 16-258/C	MTO 2017-4000	Hwy 28 Eel's Creek Bridge (Site 26-118),(Site 26-90), Hwy & (Site 40-063c)
MTO 2019-2025	Highway 401 Eastbound Express and Collector Lanes to East of Whites Road	MTO 2017-3033	Watson Road Underpass (Site 35-354), C.N.R. Subway (Site 35-407) and Westwood Road Underpass (Site 35-410)
MTO 2019-2013	West of Old Guelph Road East of Snake Road (Site No. 36-31) CPR Subway (Site No. 36-32)	MTO 2017-3024	From 0.3km north of First Line to Argyle Street South in Caledonia, Haldimand County
MTO 2019-2011	Part A - Highway 401 Westbound Core And Collector Part B - Neilson Road, W-N/S and E-N/S Ramps	MTO 2017-3013	Structural Works from Victoria Street Northerly to Guelph Street Including Victoria Street Widening
MTO 2019-2007	HWY 401 at Sites: 10-365/C 10-366/C 10-592/C CV-0162-0401-0000 CV-0162-0401-0003	MTO 2017-3012	Big Otter Creek Bridge, Site No. 20-157
MTO 2019-2004	Holland Drainage Canal Britde No 37C-0032/B2, Part 'B' Site No 24-554/C,& Site No 24-555/C	MTO 2017-3009	Mill Road Underpass, CNR Bridge
MTO 2019-2003	Bowen Rd. to Gilmore Rd. Site No. 34-129/1 & 2, Site No. 34-454C, + Site No. 34-455C	MTO 2017-3002	Saugeen River Bridge, Site No. 8-253
MTO 2019-2001	Renforth Drive Underpass, Site No 37-822/1&2 ,Site No 37-828 , Site No. 37-819 R&, Site No. 37-827	MTO 2017-3001	Indian Brook Bridge, Site No. 8-72
MTO 2018-6020	Highway 11 West of Highway 71 (Site No. 45-0105/B0)	MTO 2017-2705	Can't find anything on the Raq's thing on internet, or in emails but it is on SMS ?
MTO 2018-6019	Highway 602 at La Vallee River Bridge 9.8km West of Highway 611 (Site No. 45X-0085/B0)	MTO 2017-2701	Maple Patrol Yard - Major Mackenzie Drive
MTO 2018-6003	CPR Overhead at Airport (Site No. 48C-098): (Site No. 48C-101/1&2); (Site No. 48C-102)	MTO 2017-2253	Site No.1 (Whitby), Site No2. (Toronto), Site No.3 (Oakville)
MTO 2018-5714	Centre Line Road Bridge (Site No. 38S-0126/B0), 2km South of Highway 638	MTO 2017-2045	From Major Mackenzie Site No. 37-279; Site No. 37-1214/C; Site 37-1562/C; and Site No. 37-1215/C
MTO 2018-5601	Kendall Creek Bridge (Site # 39W-039) located on Concession Road 6/7	MTO 2017-2040	South of Fairview Street to North of Lakeshore Road
MTO 2018-5117	Highway 141, Shadow River Bridge (Site 44-159) 3.2 km west of Highway 632	MTO 2017-2037	Twelve Mile Creek Site No. 18-233, Site No. 18-268, Site No. 18-232 1/2 & site No. 18-172
MTO 2018-5107	North Hwy 124 Interchange, Northerly to 1.0km south of the McFadden Line Interchange & Site No. 44-064	MTO 2017-2036	Highway 401/403/410 Interchange Site No. 24-330 Site No. 24-332 Site No. 24-315 Site No. 24-316 Site No. 24-329 Site No. 24-318
MTO 2018-5007	South of Highway 17, Site 38S-0176/B0,	MTO 2017-2034	Hwy. 404/401 Interchange Hwy 140 Underpass Site No 37-324/1&2, Site No 37-328/1&2, Site 37-329
MTO 2018-5000	Hwy 11(Site 42-017/1) South CNR Overhead NBL (Site 42-017/2) North CNR Overhead NBL (Site 42-022/1)	MTO 2017-2031	Henley Course Overpass Site No 18-104/1&2, 15 , Site No 18-023/1&2, 16 , Site No 18-022/1&2, & Site No 18-284C
MTO 2018-4019	Highway 417 to East of Ramsayville Road	MTO 2017-2030	Highway 401 Westbound Collector From East of Allen Road to East of Jane Street and Allen Road Interchange
MTO 2018-2024	Highway 400 & 89 Interchange (Site No. 30-256)	MTO 2017-2020	Highway 403/ Longwood Channel and Lower Princess Falls (Upper Cascade) Outfall
MTO 2018-2023	Hwy 8, From 300m West of Morrison Rd. to 500m West of Safari Rd	MTO 2017-2015	Eastbound Collector Lanes, Jane Street to Avenue Road
MTO 2018-2022	Kennedy Road Underpass Bridge (Site 24-181) 750 m West of the Highway 401 / Highway 410 Interchange	MTO 2017-2007	Hwy 404/Major Mackenzie Drive

<b>MTO CONTRACT - BRIDGE ENGINEERING</b>			
<b>CONTRACT DESCRIPTION</b>		<b>CONTRACT DESCRIPTION</b>	
MTO 2017-5122	Silver Lake Culvert (Site No. 44-262) on Hwy 7289 (Site No. 44-261)	MTO 2017-2001	Major Mackenzie Drive to King Road
MTO 2017-5107	Hwy 69 & 529 (Site No. 44-009) (Site No. 44-042), (Site No. 44-053) , (Site No. 44-270) & (Site No. 44-271)	MTO 2017-2000	Hwy 427, QEW to Fasken Drive
MTO 2017-5101	Hwy 17, North of Whitson River, CPR at Dowling and Highway 7044 to North Entrance at Cartier	MTO 2016-6027	Rehabilitation of Black River Bridge (Site No. 48E-37) 20.6km North of Highway 17
MTO 2017-5008	Highway 118, Black River Bridge, Easterly 22.8 km to 0.3 km West of Highway 35	MTO 2016-6016	Neebing River Bridge (Site No. 48C-106) - 0.3km North of Arthur Street & 2.8km Southwest of Harbour Expressway
MTO 2017-4047	Part A: Bay of Quinte Skyway Bridge (Site No. 11-245);	MTO 2016-5131	Highway 17, Highway 6 and Highway 6 from Highway 17 Southerly 2.7 km
MTO 2017-4046	Hwy. 401 Site 17-065/1 and Brandon Creek Bridge WBL, Hwy. 401, Site 17-065/2	MTO 2016-5129	West of Hyundai Road Easterly for 34.7 km.
MTO 2017-4034	Norris Whitney Skyway Bridge Site No. 28-028	MTO 2016-5127	Nagagami River Bridge (Site No. 39W-005), (Site No. 39W-007), 9.4 km East of Hwy 631
MTO 2017-4031	Highway 417 from 0.9 km west of Maitland Ave. (I.C. 126) to 1.1 km east of Island Park Drive (I.C. 125)	MTO 2016-5103	from 1.2 km East of the Highway 17 / Municipal Road 55 Interchange at Sudbury, Westerly 22.2 km
MTO 2017-4017	Mallorytown Road (I/C 675) (I/C 705) and Highway 401 Sharpe's Lane Underpass (Site 16-125)	MTO 2016-4268	Rideau Canal site 3-67
MTO 2017-4008	Sawers Creek Bridge - Site No. 26-40 Perry's Creek Bridge - Site No. 26-141& Site No. 26-022	MTO 2016-4004	Wales Drive Underpass, Site 31-162, I/C (Exit 778)
MTO 2017-4000	Hwy 28 Eel's Creek Bridge (Site 26-118), (Site 26-90), Hwy 118 Irondale River Culvert (Site 40-063c)	MTO 2016-3012	Highway 7/Victoria Street Underpass
MTO 2017-3033	Watson Road Underpass (Site 35-354), C.N.R. Subway (Site 35-407) and (Site 35-410)	MTO 2016-3008	Norwich Avenue Interchange Improvements, Woodstock
MTO 2017-3024	From 0.3km north of First Line to Argyle Street South in Caledonia, Haldimand County	MTO 2016-3006	Highway 19 Interchange Improvements, Oxford County
MTO 2017-3013	Structural Works from Victoria Street Northerly to Guelph Street Including Victoria Street Widening	MTO 2016-2277	680 m West of Yonge Street
MTO 2017-3012	Big Otter Creek Bridge, Site No. 20-157	MTO 2016-2053	McLeod Road, Site 34-212/1&2 , Site 34-208 , Site 34-224 Site 34-131/1&2&5 Central Avenue Underpass, Site 34-188/1&2
MTO 2017-3009	Mill Road Underpass, CNR Bridge	MTO 2016-2050	HWY 427 Site No.37-802, 37-805, 37-829, 37-812, Site No. 37-813, Site No. 37-818-1, Site No.37-818-2
MTO 2017-3002	Saugeen River Bridge, Site No. 8-253	MTO 2016-2046	Burlington Bay Skyway NBL (Toronto-Bound) and Highway 7189 (Eastport Drive)
MTO 2017-3001	<b>Indian Brook Bridge, Site No. 8-72</b>	MTO 2016-2043	Hwy 404 NB Lanes (STA. 9+438.2 TO STA. 10+464.36), Ramp 401 W (COL) - 404N (STA. 9+733.2 TO STA. 10+174.3)
MTO 2017-2705	Can't find anything on the Raq's thing on internet, or in emails but it is on SMS ?	MTO 2016-2042	Highway 406 Site #18-236 Highway 406 & Site #18-230 CNR Overhead on Highway 140 at Forkes Road, Site #34-234
MTO 2017-2701	Maple Patrol Yard - Major Mackenzie Drive	MTO 2016-2040	From 600m North of Innisfil Beach Road to 900m North of Mapleview Drive
MTO 2017-2253	Site No.1 (Whitby), Site No2. (Toronto), Site No.3 (Oakville)	MTO 2016-2034	Highway 89 (Site No. 30-545/C)(Site No. 30-676/C) Highway 400 NB (Site No. 30-822/C1) & SB (Site No. 30-822/C2)
MTO 2017-2045	Major Mackenzie Drive Site No. 37-279; Site No. 37-1214/C; Site 37-1562/C; and Site No. 37-1215/C	MTO 2016-2029	Walkers Line / Site No. 10-147/1&2 Dorval Drive / Site No. 10-275/1&2
MTO 2017-2040	South of Fairview Street to North of Lakeshore Road	MTO 2016-2016	Tiffin Street Overpass (Site 30-176) and Barrie-Collingwood Railway Overhead (Site 30-177)
MTO 2017-2037	Twelve Mile Creek Site No. 18-233 1/2 ,Site No. 18-268 , Site No. 18-232 1/2 No. 18-172	MTO 2015-6002	Noden Causeway: (Site No 45-75-1), (Site No 45-75-2) & (Site No 45-75-3) 19.7km west of Junction Hwy 502
MTO 2017-2036	Highway 401/403/410 Site No. 24-330, 24-332 Site No. 24-315, 24-316 Site No. 24-329 Site No. 24-318	MTO 2015-5126	McGillvray Creek Bridge
MTO 2017-2034	Hwy. 404/401 Site No 37-324/1&2, Site No 37-328/1&2, Site 37-329	MTO 2015-5106	Hwy 69 Over French River
MTO 2017-2031	Henley Overpass Site No 18-104/1&2, 15 ,18-023/1&2, Site No 18-022/1&2, Site No 18-283C, Ave. 18-284C	MTO 2015-5100	Key River Bridge Hwy 69, From 1.2 km south of Highway 522, northerly 0.76 km
MTO 2017-2030	Highway 401 W East of Allen Road to East of Jane Street and Allen Road Interchange	MTO 2015-5004	Hwy 11 Seven River - Gravenhurst
MTO 2017-2020	Highway 403/ Longwood Channel and Lower Princess Falls (Upper Cascade) Outfall	MTO 2015-4188	Wyman Road Underpass Bridge Hwy 401
MTO 2017-2015	Eastbound Collector Lanes, Jane Street to Avenue Road	MTO 2015-4185	Switserveille & Hilaire Bridge
MTO 2017-2007	Hwy 404/Major Mackenzie Drive	MTO 2015-3017	Hwy 21 Culvert Replacement, 0.1km East of Craig Street, Within Saugeen First Nation #29
MTO 2017-2004	Highway 400/401, 4 Bridge Rehabilitation; Highway 400 Highway 401. Part B: Highway 400 Twin Culvert Replacement	MTO 2015-3002	Veterans Memorial Parkway (Site No. 19-515)

<b>MTO CONTRACT - BRIDGE ENGINEERING</b>			
<b>CONTRACT DESCRIPTION</b>		<b>CONTRACT DESCRIPTION</b>	
MTO 2015-2039	Jordan Road Overpass & 9 Bridges Third Ave, Bridge # 9,10,11,12,13,14, 15,18	MTO 2012-5127	Antoine Creek Culvert Rehab
MTO 2015-2035	Highway 401 Westbound Collector from east of Bayview Avenue to east of Allen Road	MTO 2012-4030	1000 Islands Parkway at Landon's Bay, Sifton Horse Crossing and Jones Creek and Jones Creek Structures west of Interchange 685 (Hwy 401)
MTO 2015-2017	Winston Churchill Boulevard/ Site No. 24-375/1&2 , Site No. 24-191/1&2, Hwy 427	MTO 2012-4017	CNR HWY 401, (I/C 526),Highway 401 - Site No. 11-185, (I/C 525) Highway 401 - Site No. 11-164, Hwy 62 (I/C 543)
MTO 2015-2007	CNR Overhead Washago Bridge Demolition & Trent - Severn Canal Bridge Demolition	MTO 2012-3022	Wonderland Road overpass
MTO 2015-2006	Mountaiview,Victoria, Ontario &Tufford Bridges	MTO 2012-3011	From Krug Street to 0.4km north of Regional Road 15
MTO 2015-2004	Hwy 400 /Hwy 9, From South of 19th Side Road to North of South Canal Bridges	MTO 2012-3000	Hwy6- Underpass, HWY 401 Wellington Road 32 Underpass, Wellington Road 35 Underpass
MTO 2014-6031	Gravel River Bridge (Site No. 48C-18), (Site No. 48C-18) Hwy. 11 and Hwy. 17 and 46.6 km east of Nipigon	MTO 2012-2046	Hwy 140 CNR/CPR Structure
MTO 2014-6027	Cedar Creek Bridge (Site No. 48E-27), , 1.8 km West of Highway 614	MTO 2012-2036	Bridge Rehab Grays Rd to Winona
MTO 2014-6000	Pic River Bridge (Site No. 48E-025), 7.2 km East of the Town of Marathon	MTO 2012-2003	Waterdown Rd Bridge, From west of Freeman Interchange to east of Highway 6. Site no 10-191/1, 10-191/2, 10-194, 10-195, 10-196 - 5.7 km
MTO 2014-5139	HWY 17 - Aux Sables River Bridge, (Site No. 46-189), 0.5 km east of Highway 553	MTO 2012-2000	Burlington Skyway
MTO 2014-4040	Mississippi River Bridge (Site No. 15-064), Located approximately 2.5km west of Highway 15	MTO-2011-4035	Palace Rd
MTO 2014-4032	Cobourg Creek - Hwy 401, (IC #472) Easterly for 7.5Km to 2.3Km East of Nagle Road	MTO 2011-4009	Papineau North Bridge
MTO 2014-4017	Site No. 11-329c No Name Culvert Site No. 11-255bc Moira River - Robbins Creek Culvert Site No. 28-034c Union Road Culvert	MTO 2011-3003	LRT Overhead Hwy 8, Kitchener, From 1.9 km west of Fischer-Hallman Road easterly to 0.8 km east of Courtland Avenue - 6.5 km
MTO 2014-3014	Highway 401 East of Waterloo Regional Road 8 to 0.1 km West of Waterloo Regional Road 24	MTO-2011-2049	QEW- 6x Bridges
MTO 2014-3004	Various Locations on Highway 6, Between Hepworth and Tobermory in Bruce County	MTO 2011-2005	Hwy 406
MTO 2014-2044	Hwy 401 WB (STA. 27+950.0 TO STA. 28+385.9) HWY 401 WB COLLECTOR LANES TO 700m W. OF LESLIE ST	MTO-2011-2001	Burlington Skyway
MTO 2014-2042	Hwy 401 WB Stage 1, From 100m West of Mclaughlin Road to 500m West of Dixie Road	MTO-2010-4012	CNR Hwy 401/ Hwy 62 & 37
MTO-2014-2036	<b>Tee Creek , Black Creek, QEW Lyons Creek Bridge</b>	MTO 2010-2255	Simco Rd- Overpass 400
MTO 2014-2026	Hwy 410/Etobicoke Creek Bridge,	MTO-2010-2020	Hwy 403-Burlington CNR 401
MTO 2014-2025	Burloak, Appleby & Trafalgar Bridges	MTO-2010-2006	St-Vincent Overpass-Barrie
MTO 2014-2013	Hwy 403 - Eastgate Parkway Extension, Highway 403 from Mavis Road to Eglinton Avenue	MTO-2009-5135	CPR- Swing Bridge Sudbury
MTO 2014-2011	QEW Underpass 7th Street	MTO 2009-5105	Culver Lining SSM
MTO 2014-2009	Oakville, Fifth Line -Various Bridges-Design Built, (site 10-056), site 10-073/1&2), Oakville Creeek West Branch (site 10-74/1&2)	MTO 2009-5004	Bracebridge
MTO 2014-2002	Appleby, Campbell, sixteen mile Bridge/ Hwy 401- Design Built	MTO 2009-4263	Old Highway 17- Mississippi River Bridge
MTO 2013-5126	Highway 520 to 2.4 km East of Highway 510 and, Highway 520 from 0.8 km South of Highway 510 Northerly 1.1 km	MTO-2009-4013	Moira River Bridge / CNR 401
MTO 2013-3014	Hwy 8 W-E Ramp Underpass Hwy 401	MTO-2009-4012	CNR 401/ Hwy 62 & 37
MTO 2013-2052	Hwy 400 Bayfield St. Underpass, Site 30-172; , Site 30-178-1/2; Highway 400-Anne Street Underpass, Site 30-347	MTO-2009-4010	5th Line Overpass
MTO 2013-2030	QEW Niagara, 6 Bridges, Site No. 34-189, Site No. 34-219, Site No. 34-220, Site No. 34-221, Site No. 34-205/1 & 2 Site No. 34-206/1 & 2 & Site No. 34-131/1 & 2	MTO 2009-3007	Calodonia
MTO 2013-2023	Glendale Ave Site #18-170/1/2, Highway 406 & Beaverdams Road, Site #34-160. Part B: Highway 406 NB	MTO 2009-2274	Tiffin St. Overpass
MTO 2013-2015	Hwy 401W - Hwy 427N, Site No. 37-821	MTO 2008-4020	County Rd 17 - Hawkesbury
MTO 2013-2005	Hwy 403,Site 36-096 ; Site 36-097; Site 36-098 ; Site 36-099 Hamilton Drive Underpass; Site 36-101 Wilson Street Underpass	MTO 2008-4019	Garden City Skyway
MTO 2013-2003	Richmond St & Pine St Overpass, Highway 58 & Pine Street, Site #34-179 Highway 58 & Richmond Street, Site #34-280	MTO 2008-4006	Trent River

**MTO CONTRACT - BRIDGE ENGINEERING**

<b>CONTRACT DESCRIPTION</b>		<b>CONTRACT DESCRIPTION</b>	
MTO 2008-4005	Bethany Creek Structure County Road 38	MTO 2006-5016	Muskoka Road 5 Interchange
MTO 2008-4004	Peterborough	MTO 2006-3040	Hwy 23
MTO 2008-4004	Hwy 115/7 County Road 28 Interchange Northerly	MTO 2006-2021	Garden City Skyway
MTO 2008-2010	Garden City Skyway	MTO 2005-3049	Hwy 6 & Side Roads
MTO 2008-2000	Rouge River	MTO 2004-4016	Sucker Creek Napanee
MTO 2007-5107	NewLiskeard	MTO 2004-2013	Henley Bridge & Highway Widening
MTO 2007-4028	Corbyville Creek Bridge	MTO 2003-2010	QEW Widening & CN Railway Replacement
MTO 2007-3051	Tilsonburg	MTO 2003-4007	Hwy 28
MTO 2007-2034	QEW Burlington Bay Skyway	MTO 2003-4000	Coburg
MTO 2007-2033	QEW Burlington Bay Skyway	MTO 2002-2004	HWY 58A
MTO 2007-2030	Hwy 400 NBL/ CPR Overpass	MTO-2002-2001	HWY 420 - NF
MTO 2007-2029A	Hwy 405		

**TENDER, COST ESTIMATES SCHEDULING & CONSTRUCTABILITY**

<b>CONTRACT</b>	<b>DESCRIPTION</b>
MTO Specialist MTO 2018-2024 Hwy 89	MTO Specialty - Represeting CA as a Bridge Structural Expert
MTO Specialist MTO 2018-2007 -Thorold Tunnel Rehabilitation	MTO Specialty - Represeting CA as a Bridge Structural Expert
MTO Specialist MTO 2017-3002Saugeen River Bridge, Site No. 8-253	MTO Specialty - Represeting CA as a Bridge Structural Expert
MTO Specialist MTO 2017-3001 Indian Brook Bridge, Site No. 8-72	MTO Specialty - Represeting CA as a Bridge Structural Expert
MTO- Pre-Tender MTO Hwy 69-CEAA Project 4 28 Bridge Rehabilitation	Preliminary - Design Evaluation, Constructability Review , Cost Estimate and Scheduling
MTO- Pre-Tender MTO Hwy 69-CEAA Project 4 25 Culvert Replacement	Preliminary - Design Evaluation, Constructability Review , Cost Estimate and Scheduling
MTO- Pre-Tender Hwy 427 Extension to Mackenzie Dr. 14 Bridge Rehabilitation	Preliminary - Design Evaluation, Constructability Review , Cost Estimate and Scheduling
MTO- Pre-Tender Hwy 427 Albion Rd to Hwy 7 7 Bridge Rehabilitation	Preliminary - Design Evaluation, Constructability Review , Cost Estimate and Scheduling
Hwy 407 ETR - Tender Hwy 400 SB Mainline Over Hwy 407 ERT	Tender Design, Review and Second Stamp

**ALL OTHER CONTRACTS -BRIDGE ENGINEERING EXPERIENCE**

<b>CONTRACT</b>		<b>CONTRACT</b>	
<b>OTHER ONTARIO -DESCRIPTION</b>		<b>VARIOUS PROVINCES -DESCRIPTION</b>	
ON - City of Sudbury	Bowland's Bay Bridge	Yk- Highway & Public Works	Big Creek Bridge Replacement
ON-City of Sault St Marie	Bridge #30 - Sault St Marie	NWT- Highway & Public Works	Trout River Bridge Rehabilitation
ON-County of Brant	Drake Bridge Rehabilitation	NWT- Highway & Public Works	Hay River & Pine Point Bridge Rehab.
ON-County of Brant	McKay Bridge Rehabilitation	NWT- North West Territories	Buffalo River Bridge Rehabilitation
ON Sarnia	Donohue Bridge Rehabilitation,	YK- Highway & Public Works	Upper Liard River Bridge Rehabilitation
ON City of Cornwall	Brookdale CNR Overpass Rehab,	BC- Creston	Kootenay River Bridge Rehabilitation
ON Town of Arnprior	Madawaska River Bridge - County Rd, Rehab.	BC-Prince George	Parsnip River Bridge
ON, Hamilton	Bridge 458 - York Boulevard, Rehab.	BC-City of Kamloops	Overlanders Bridge Rehabilitation
ON-Wallaceburg	Walpole Island Swing Bridge Rehabilitation	BC-Town of Illecillewaet	Illecillewaet Bridge No 1 & 2
ON, Town of Lasalle	Front Road Bridge over Turkey Creek Rehab	BC- Central Kootenay	Brilliant Bridge Rehabilitation
ON- Oxford	Bridge #784331 Rehab Oxford Rd 33 Rehab.	BC- VANOC -Vancouver	Whistler Bobsleigh
ON- Kenora	Keewatin Channel Bridge Rehabilitation	SK- North Battleford	Bridge #40 over Battle River
ON - Hwy 401	Wilton Rd Bridge Rehabilitation	SK- North Battleford	Hwy #16 over Hwy #4
ON- CBR & CPR	CBR & CPR Overhead Bridge Rehabilitation	SK- North Battleford	Hwy #4 over Hwy #16
ON- Milton	Laurier Bridge Rehabilitation	SK- North Battleford	Hwy #4 over Battle River
ON - NOTL	Queenston Street Bridge Rehabilitation	SK- Nipawin	New Nipawin Bridges over Hwy No 55, Rehab.
ON - Bancroft	Bridge Street Bridge Rehabilitation	Government of Saskatchewan	Idlwyld Drive Overpass
ON-County of Renfrew	Bonnechere Bridge Rehabilitation	Government of Saskatchewan	University Bridge Rehabilitation
ON-City of Mississauga	Cooksville Bridge Rehabilitation	Government of Saskatchewan	Diefenbaker Bridge
ON-City of Mississauga	Derry Rd Bridge Rehabilitation	Government of Saskatchewan	Lewan Drive Bridge over Hwy 1
ON-City of Mississauga	Mullet Creek Bridge Rehabilitation	Government of Saskatchewan	McOrmond Drive Pedestrian Bridge
ON- Peterborough	Davidson Street Bridge Rehabilitation	SK-Saskpower	Spillway Access
ON-The District of Muskoka	Paint Lake Bridge Rehabilitation	SK-City of Saskatoon	Brevoot Lakeview SSSF
ON-The District of Muskoka	CP Overhead Bridge Muskoka Rd	AB - Red Deer	Edgar Industrial Drive
ON-Town of Kapuskasing	O.N Rail Bridge Over Mattawishquia River	AB- Coosa County	Hwy 2 SBL & NBL over Hwy 53 Rehab.
ON-City of Kenora	Winipeg River Arch Bridge Rehabilitation	AB-Medicine Hat	Finlay Bridge Rehabilitation
ON- Ontario Northland	Bridge Over Abitibi River Bridge Rehab.	AB-Banff National Park	Animal underpass Bridge Rehabilitation
ON-County of Peterborough	Crowe Bridge	AB-CN Canadian National	CN Peace River Bridge
ON-County of Peterborough	CPR Bridge Rehab	AB-City of Edmonton	Quesnell Bridge N. Saskatchewan River
ON-Town of Cochrane	ONR Bridge - Abitibi River	AB-City of Edmonton	James MacDonald Bridge
ON-Niagara Falls-BC	Whirlpool Bridge Rehab	AB-City of Calgary	25 th Ave Bridge/ over Elbow River
ON-Niagara Falls- OPG	OPG Cofferdamn Rehab	AB-City of Edmonton	49 th Ave Bridge/ Red Deer River
ON-Niagara-On-The-Lake	Queenston Street Bridge - NOTL	AB-City of Calgary	85th Street Bridge/ Bow Road
ON-City Niagara Falls	Inlude Railway Project	AB-Public Works	Bow River Bridge / Banff National Park
ON-ORC - Toronto	Aluminum Building Design	AB-City of Calgary	Portland Street Bridge
ON-City of Thorold	Wind Mill Factory Rehab	AB-City of Edmonton	White Ave Bridge Over Mill Creek
ON-City of Welland	International Flat Water Center	AB-City of Calgary	32 nd Ave NE Bridge Over CPR
ON-City of Welland	Solar Farm Design	AB-Infrastr. Transportation	Deerfoot Trail Hwy 2
ON-City of St-Catharine	Performing Art Center	AB-Infrastr. Transportation	Athabasca River Hwy 63- Fort Mac
ON-Brook University	Art Center	AB-Infrastr. Transportation	Spirit River Hwy 727

<b>ALL OTHER CONTRACTS -BRIDGE ENGINEERING EXPERIENCE</b>			
<b>CONTRACT</b>		<b>CONTRACT</b>	
<b>OTHER ONTARIO -DESCRIPTION</b>		<b>VARIOUS PROVINCES -DESCRIPTION</b>	
ON-Municipality of Muskoka	Paint Lake Bridge	AB-Infrast. Transportation	Gleichen Bridge Rehabilitation
ON-County of Haliburton	Head Lake Bridge Rehabilitation	AB-Infrast. Transportation	Redwillow Rier Bridge Hwy 722
ON-Town of Wilmot	Nafziger Road Bridge	AB-Infrast. Transportation	Tawatina bridge
ON-City of Hamilton	Hwy 8 Culvert Replacement,	AB-Infrast. Transportation	Hwy 17- Aux Sables River Bridge
ON-Town of Etobicoke	Main St. South Bridge -	AB-Infrast. Transportation	102 Ave Groat Rd Bridge
ON-City of Oakville	CN-GO Niagara -	AB-Town Whitefish -First Nation	Whitefish lake - Water Treatment Plant
ON-City of Hamilton	CN Bridge - Dejadins	AB-Jasper National Park	Culvert Replacement Miette Hot Springs
ON-City of Oakville	Rebecca Street Bridge Rehab	AB-Infrast. Transportation	Peace River Brodge Hwy 88
ON-Region of Waterloo	Grandlink Stage 1 LRT	AB-Infrast. Transportation	Wandering River Bridge
ON-Niagara Region	Burgoyne Bridge Replacement	AB-Infrast. Transportation	Hwy 27 Over Ghostpine Creek
ON-Niagara Region	Smithville Bridge	AB-Infrast. Transportation	Keg River Bridge Hwy 35 AB
ON-Lanark County	Mississippi River Bridge	AB-Infrast. Transportation	Terwillegar Footbridge, AB
ON-Niagara Region	RR #81 Road Rehabilitation	AB-Infrast. Transportation	West Nose Creek Bridge
ON-CN Contract	CPR Milton Bridge Replacement	AB-Infrast. Transportation	Hwy 779 Over Hwy 16A Stony Plain
ON-City of Hamilton	King -Kenilworth	AB-Infrast. Transportation	100 th Ave Bridge Rehab
ON-City of Kitchener	Huron Rd Bridge Rehab	AB-Infrast. Transportation	Medicine Hat Bridge
ON-County of Brant	Nith River Bridge Rehab	AB-Infrast. Transportation	Henderson Creek Bridge
ON-Northumberland County	Ganaraska River Bridge Rehab	AB-Infrast. Transportation	Dunvegan Bridge
ON-Haldimand County	Oneida Bridge Rehab	AB-Infrast. Transportation	Red Deer River Bridge
ON-City of Brockville	Ormond Bridge Rehab	AB-Infrast. Transportation	196th Ave Bridge over Hwy 2
ON-Town of Caledon	Dick Bridge Rehab	AB-City of Calgary	Bow Trail Bridge - Eastbound
ON-County of Simco	Comartin Bridge	AB-City of Edmonton	Whitemud Drive- Calgary Trail
ON-City of Hamilton	McMaster HeathCenter	AB-City of Edmonton	Dawson Bridge
ON-City of Hamilton	Hilton-Hotel	AB-City of Edmonton	Fox Drive Retaining wall
ON-Ontario Northland	Jabone Creek Mile Rehabilitation	AB-City of Edmonton	Whitemud Retaining Wall
ON-Hwy 407 Toll Route	Hwy 400 & Brant St.	AB-Municipality of Wood Buffalo	Hangingstone River Bridge - Fort Mac
ON-CN Montreal Line	Mud Creek Hwy 2- Culvert	AB-Yellowhead Conty	New Bridge Construction & Demolition
ON-CN Rail Culvert	Cobourg Culvert	NB-Dept. of Transportation	Regent Street Bridge NBTI Fredericton
ON-City of London	Highbury Avenue Bridge	NB-Dept. of Transportation	Renous River Bridge #1
ON-City of Ottawa	Mackenzie King Bridge	NB-Dept. of Transportation	Hugh John Flemming Bridge Stage 1 &2
ON-Region of Waterloo	Cambridge Main St. Bridge	NB-St-John Harbour Bridge Authorit	St- John Harbour Bridge
ON-St-Lawrence Seaway	Bridge #19 Port Colborne	NB-Dept. of Transportation	Nashwaak River Bridge No 4
ON-St-Lawrence Seaway	Lock 3, 4, 5, 6, 7 & 8	NB-Dept. of Transportation	One Mile House Viaduct
ON-Niagara Falls BC	Rainbow Bridge Rehabilitation	NS- Port Hawksbury	Point Tupper Bridge Rehabilitation
ON-Trent-Severn Waterway	Bolsover Swign Bridge Replacement	NS-Transportation & Infrastruture	Antigonish Main St. Bridge
ON-Trent-Severn Waterway	Carrying place Swign Bridge	NS-Transportation & Infrastruture	Crowdis Bridge Replacement
ON-Trent-Severn Waterway	Rainny Falls Swign Bridge	NS-Transportation & Infrastruture	Caribou Ferry Terminal
ON-City of Thorold	Decew Bridge	NL-Marine Atlantic	Shoal Gove Bridge
ON-City of Belleville	Dundas St. West CPR Overpass	NL-Marine Atlantic	Marine Atlantic Port Aux Basques
ON-City of Peterborough	Hunter Street Bridge	NL-Terra Nova National Park	Bridge Repair-Big Brook Bridge
ON-Region of Waterloo	Main St. Cambridge	ON-Ottawa Maclan County	Ottawa Dwyer Hil
ON-Region of Ottawa	O-Train Bridge	ON-Region of Niagara	Welland Main Bridge